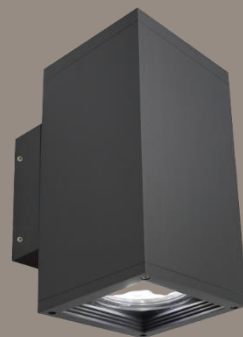




THALASSA ET6161

OUTDOOR PRODUCTS
SQUARE SCONCE



The Thalassa outdoor surface mounted square LED fixture was created with a sleek design deliberately, so it could blend in with many different outdoor building styles. The Thalassa also has an impressive efficacy of 95 LPW providing performance as well as elegance in the install environment. Finally, this product is a complete aluminum die cast offering an unparalleled sense of finesse, fixture strength and quality.

Project: _____

Qty: _____

Notes: _____

OPERATING & ELECTRICAL

Input Voltage 100-277Vac

Power factor 0.9

Dimming 0-10V external dimming down to 10% (with DMG/SDMG option)

Total harmonic distortion (THD) <20%

PERFORMANCE

Lumens per Watt ~95 LPW at 80CRI

Power consumption 40W, 80W

Beam angle 8°, 18°, 36°, 62°

MECHANICAL & HOUSING

Housing Aluminum die cast

Lens Highly durable, shatterproof tempered glass lens ensures high efficiency light output for a clean, evenly illuminated surface with minimal glare.

Finish

Aeralux white, black, gray, bronze, silver (RAL9006) powder coat finish

Power Supply Factory wired electronic LED driver

LED Board COB

APPLICATION CONDITION

Ambient temperature range -25 to 50°C

Protection IP65

COMPATIBLE MOUNTING

Mounting Wall mount

WARRANTY

System warranty 5 years

Lumen maintenance Rated for 85% initial lumen output at 50,000 hours of operation, operated at 25°C ambient temperature; per guidelines published by the Illuminating Engineering Society (IES). (L85 at 50,000 hours)

ORDERING GUIDE

EXAMPLE: ET6161-C40-3-8-80-W-DMG

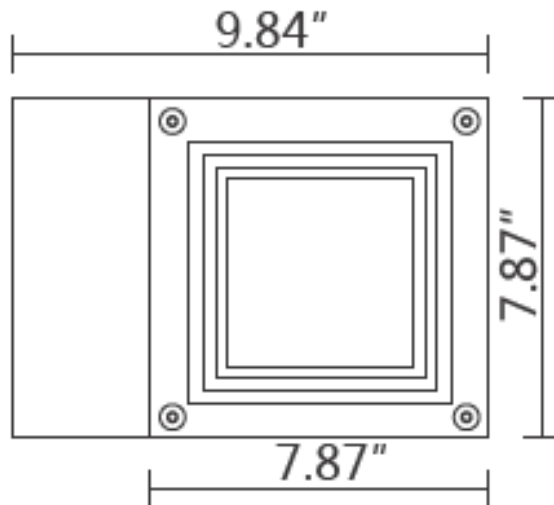
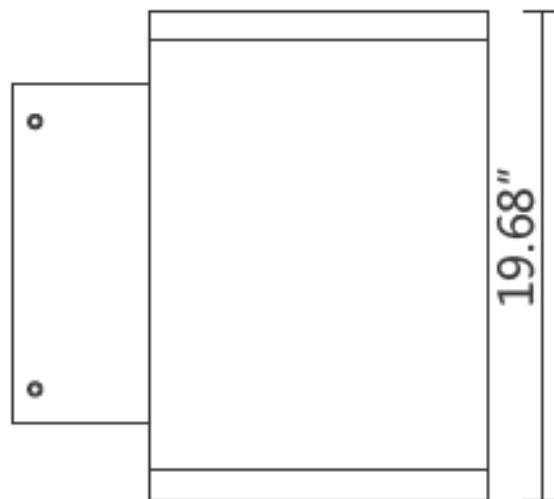
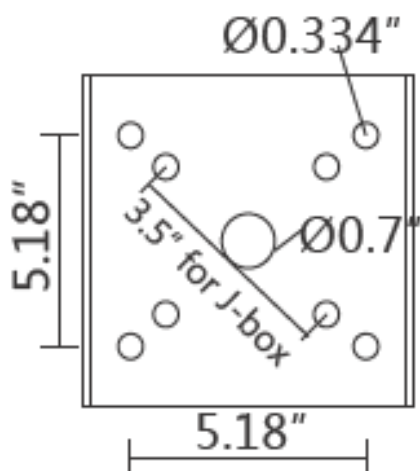
| ET6161 | -C80 | -3 | -8 | -80 | -W | -DMG |
|--|----------------------------------|-----------------|-----------------------|---------------|--|--|
| FIXTURE FAMILY | POWER | CCT | BEAM ANGLE | CRI | FINISH | CONTROLS |
| ET6161 AERLUX Thalassa ET6161 outdoor wall mounted square sconce fixture | -C80 80 watts: 7400 lumens | -3 3000K CCT | -8 8° beam angle | -80 80 CRI | -B Black powder coat finish | -DMG 0-10V external dimming down to 10% |
| | | -4 4000K CCT | -18 18° beam angle | | -W White powder coat finish | |
| | | -5 5000K CCT | -36 36° beam angle | | -S Silver (RAL9006) powder coat finish | |
| | | | -62 62° beam angle | | -G Gray (RAL7012) powder coat finish | |
| | | | | | -Z Mineral bronze powder coat finish | |



Aeralux Incorporation All Rights Reserved. Any information provided is subject to change without notice. All values are typical values when measured under normal laboratory conditions.

DIMENSIONS

EXAMPLE: ET6161-C40-3-8-80-W-DMG



LUMEN ESTIMATE

Lumen output varies based on CCT and CRI. An estimate of lumen output of the various CCT/CRI combinations, use correction factors as per table below:

Lumen estimate adjustment factors

| CCT | 2700K | 3000K | 3500K | 4000K |
|----------------|-------|-------|-------|-------|
| NORMAL (80CRI) | 0.94 | 1 | 1.02 | 1.03 |

PHOTOMETRIC DATA

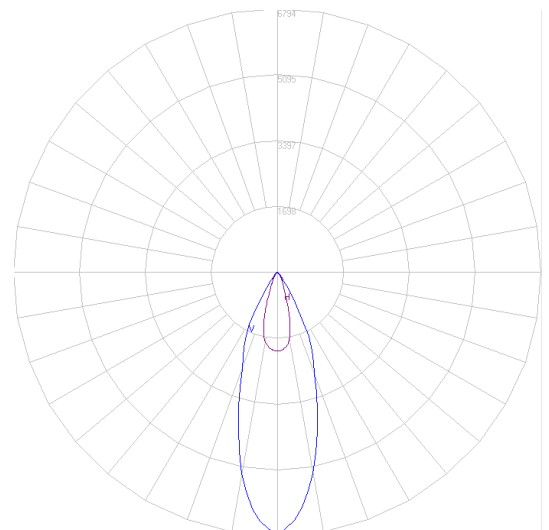
ET6061-C40-3-36-80

Coefficients of utilization

| Ceiling | 80% | | | | 70% | | 50% | | 30% | | 0% |
|---------|---|-----|-----|-----|-----|-----|-----|-----|-----|-----|----|
| Wall | 70% | 50% | 30% | 10% | 50% | 10% | 50% | 10% | 50% | 10% | 0 |
| RCR | Zonal Cavity Method – Effective floor reflectance = 20% | | | | | | | | | | |
| 0 | 82 | 82 | 82 | 82 | 80 | 80 | 76 | 76 | 73 | 73 | 69 |
| 1 | 79 | 77 | 75 | 74 | 75 | 73 | 73 | 71 | 70 | 68 | 65 |
| 2 | 75 | 72 | 70 | 68 | 71 | 67 | 69 | 66 | 67 | 64 | 62 |
| 3 | 72 | 68 | 65 | 63 | 67 | 62 | 66 | 61 | 64 | 60 | 58 |
| 4 | 69 | 65 | 61 | 59 | 64 | 58 | 62 | 58 | 61 | 57 | 55 |
| 5 | 66 | 61 | 58 | 55 | 61 | 55 | 60 | 55 | 58 | 54 | 53 |
| 6 | 64 | 58 | 55 | 52 | 58 | 52 | 57 | 52 | 56 | 51 | 50 |
| 7 | 61 | 56 | 52 | 50 | 55 | 49 | 54 | 49 | 54 | 49 | 48 |
| 8 | 59 | 53 | 50 | 47 | 53 | 47 | 52 | 47 | 51 | 47 | 46 |
| 9 | 57 | 51 | 47 | 45 | 50 | 45 | 50 | 45 | 49 | 45 | 44 |
| 10 | 54 | 49 | 45 | 43 | 48 | 43 | 48 | 43 | 47 | 43 | 42 |

Zonal lumen

| Zone | Lumens | Zone | Lumens |
|-------|---------|---------|--------|
| 0-10 | 567.03 | 90-100 | 0 |
| 10-20 | 1088.53 | 100-110 | 0 |
| 20-30 | 902.5 | 110-120 | 0 |
| 30-40 | 268.81 | 120-130 | 0 |
| 40-50 | 86.72 | 130-140 | 0 |
| 50-60 | 28.57 | 140-150 | 0 |
| 60-70 | 11.49 | 150-160 | 0 |
| 70-80 | 5.36 | 160-170 | 0 |
| 80-90 | 2.39 | 170-180 | 0 |





THALASSA ET6161

OUTDOOR PRODUCTS

SQUARE SCONCE

PHOTOGRAPHS

PREMIUM MATERIALS

Constructed from aluminum die-cast enhancing thermal heat dissipation while providing excellent figure strength.



MULTIPLE FINISH OPTIONS

Select from black, white, or silver powder coat anti-cracking finishes to accent your project space.

MULTIPLE BEAM ANGLES

Customize your fixture with a unique set of beam angles in the uplight or downlight orientation with the option to having a 20-degree tilt towards the wall.

CRI

80 CRI provides greater rendering allowing for a more natural light look.

Aeralux Inc.
1-514-447-7598 | 1-630-534-2589
www.aeralux.com

Aeralux Incorporation All Rights Reserved. Any information provided is subject to change without notice. All values are typical values when measured under normal laboratory conditions.

aeralux