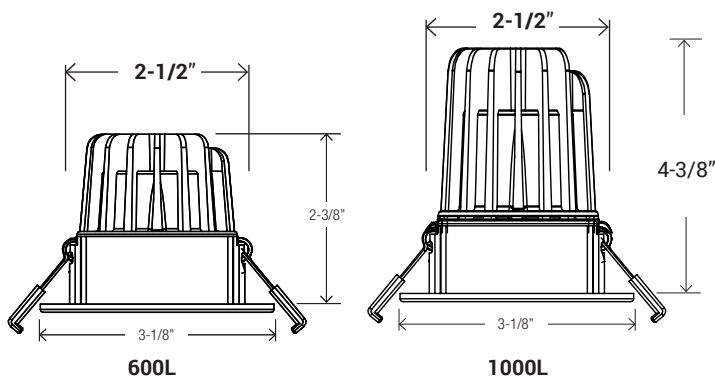
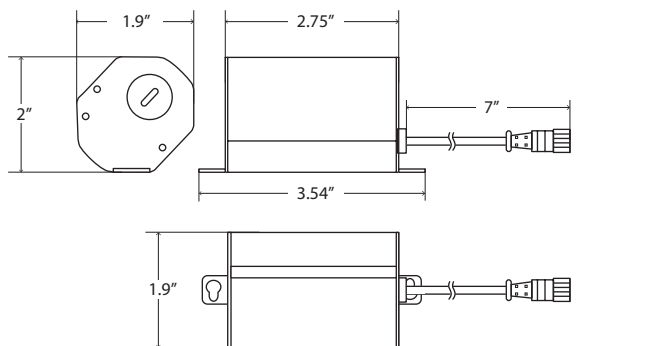


EASY 5 COLORS
SELECTOR
2700K • 3000K • 3500K • 4000K • 5000K



NOMINAL LUMENS	DELIVERED LUMENS	WATTAGE
600	632	8W
1000	1015	14W

Based on 3000K, 90+ CRI. Actual wattage may vary +/- 5%

INSTALLATION

Cut hole in ceiling. Insert luminaire into opening by squeezing spring clips on both sides of luminaire. The width in ceiling needed for the driver to fit is 3".

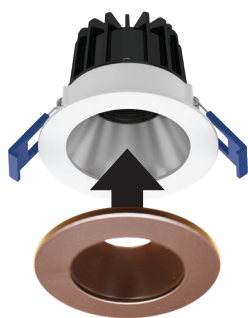
FEATURES

2" LED luminaire with field-changeable reflector engineered for new construction, remodel or retrofit to accommodate insulated or dropped ceilings. Remote driver allows easy installation and maintenance. Small aperture and shallow depth are ideal for unlimited applications.

LUMENS	600, 1000
CCT	27K/30K/35K/40K/50K
CRI	90+
COLOR QUALITY	3-Step MacAdam Ellipse
CONSTRUCTION	Aluminum die-cast body and trim
TRIM OPTION	Round Reflector
TRIM COLORS	WH (White-standard) BZ (Bronze), BK (Black), CP (Copper), SN (Satin Nickel)
TRIM COLORS	WH (White-standard) BZ (Bronze), BK (Black), CP (Copper), SN (Satin Nickel)
DISTRIBUTION	24 degree, 38 degree and 60 degree
DIMMING	DIMTR (Triac)
EMERGENCY	16W high voltage inverter (remote)
LIFETIME	L70 at 50,000 Hours
PHOTOMETRIC TESTS	In Accordance with IES LM79-08, LM80 and TM-30, TM-21

- IC-Rated and Air-Tight ready and may be in direct contact with insulation.
- Can be installed in applications with limited plenum clearance.
- May be installed in drywall or suspended ceilings.
- Flicker-free 120V forward-phase Triac dimming down to 5%.
- Even illumination of luminaire is achieved by utilizing patent-pending optics along with edgelit LED technology.
- Aluminum die-cast body and trim.

SLIM TRIM

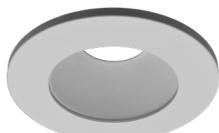


TRIM RING

EXAMPLE: RL271-600L-DIMTR-120-27K/30K/35K/40K/50K-90-24D-WH

TYPE	LUMEN	CCT	CRI	DISTRIBUTION	FINISH
RL271	<input type="checkbox"/> 1000L-DIMTR-120 <input type="checkbox"/> 600L-DIMTR-120	<input type="checkbox"/> 27K <input type="checkbox"/> 30K <input type="checkbox"/> 35K <input type="checkbox"/> 40K <input type="checkbox"/> 50K	<input type="checkbox"/> 90+	<input type="checkbox"/> 24D <input type="checkbox"/> 38D <input type="checkbox"/> 60D	<input type="checkbox"/> SHZ-WH Satin Haze/White (Standard)

TRIM RINGS



RL271-RT-W-WH
White-White



RL271-RT-SN-SN
Satin Nickel-Satin Nickel



RL271-RT-MB-BK
Black-Black



RL271-RT-MB-WH
Black-White



RL271-RT-BZ-BZ
Bronze-Bronze



RL271-RT-CP-CP
Copper-Copper

RL271-RT-BZ-BZ

INSERTS
<input type="checkbox"/> RL271-RT-BZ-BZ-Bronze <input type="checkbox"/> RL271-RT-CP-CP-Copper <input type="checkbox"/> RL271-RT-MB-BK-Black <input type="checkbox"/> RL271-RT-SN-SN-Satin Nickel <input type="checkbox"/> RL271-RT-MB-WH-Black/White <input type="checkbox"/> RL271-RT-W-WH-White/White

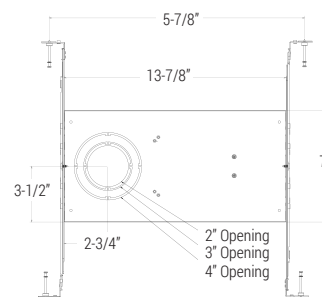
ACCESSORIES



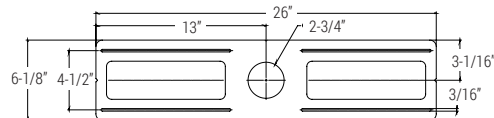
RL-ACC-SLIM-1-10F
10-ft long extension



RL-ACC-SLIM-1-20F
20-ft long extension



RL-UNV-2/3/4
For use with: 2", 3", 4"
Universal mounting plate



RL-ACC-SLIM-2-ROUGHPLATE
Rough-in plate for use with 2" downlights

RL-ACC-SLIM-1-10F

OPTIONS
<input type="checkbox"/> RL-ACC-SLIM-1-10F - 10ft Long Extension <input type="checkbox"/> RL-ACC-SLIM-1-20F - 20ft Long Extension <input type="checkbox"/> RL-UNV-2/3/4 - Universal Mounting Plate for 2", 3" and 4" <input type="checkbox"/> RL-ACC-SLIM-2-ROUGHPLATE - 2" Mounting Plate